

Lifestyle analysis based on biophysical signals

SRR
Algorithm Research Team
Sensor Algorithm Lab

Maxim Titov (m.titov@samsung.com)

Lifestyle analysis based on biophysical signals

■ Project Summary:

- Personal lifestyle and wellness tracking and guiding system based on sensor data analysis
- Expand Samsung Health with automatic and convenient way to monitor eating habits (no user actions required)

■ Goals & Deliverables:

- App design “Meal monitor”



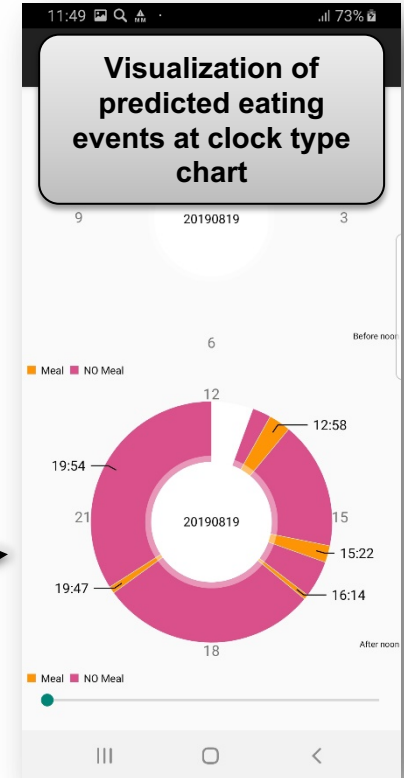
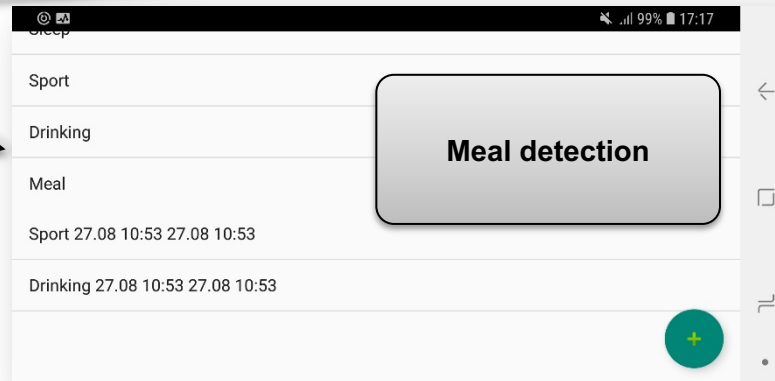
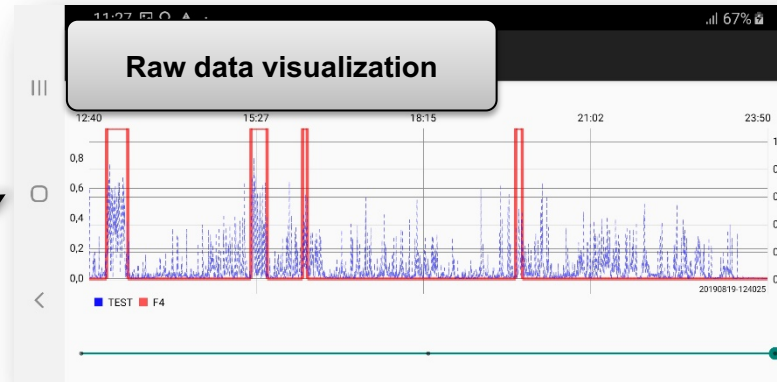
■ Differentiation points:

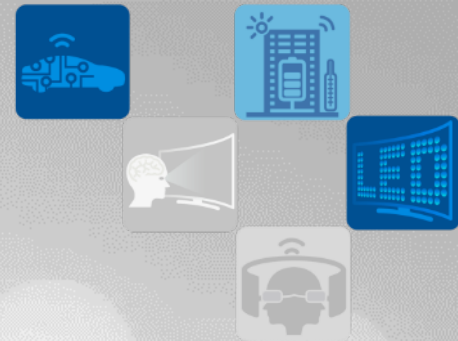
- Meal detection in quasi real-time or real-time mode
- Algorithm is based on existing sensors only
- Easy to integrate into Samsung Health infrastructure



Purpose and functions

- Data collection
- Meal detection(ML algorithms, JAVA implementations)
- Visualization
- Statistics





THANK YOU!

감사합니다!

СПАСИБО!